

FOLLOW THAT... CRAYON

*An intermodal adventure
with a colorful ending!*



PART III

Compliments of:

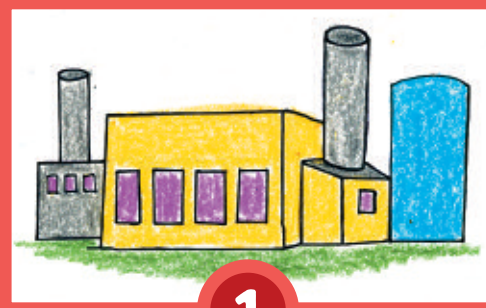
CAGTC

Coalition for America's
Gateways & Trade Corridors

www.tradecorridors.org

Telephone: (202) 828-9100

Departure Point: RAW MATERIALS PLANT

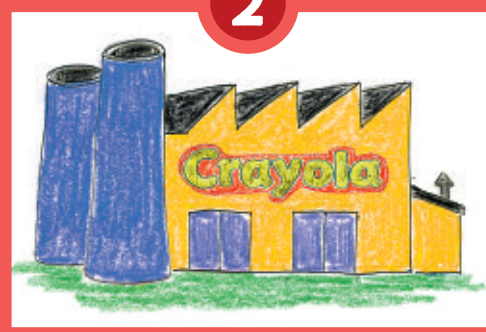


1

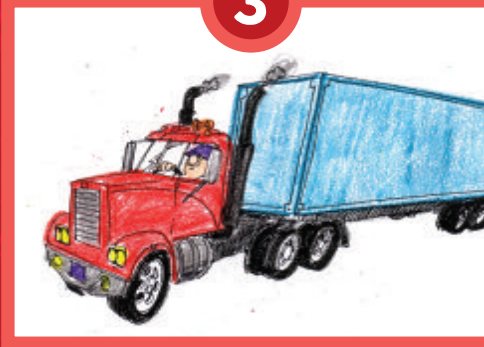


The raw materials are transported by RAIL
to the Crayola® manufacturing factory.

2



3



The boxes of crayons are picked up
by TRUCK.

4



U.S. Port Facility

5



The boxes of Crayons are exported by SHIP.

Final Destination: ENGLAND



6

The crayons are offloaded and distributed
to retail stores throughout the country.

**Intermodal freight infrastructure
and goods movement must be
adequately funded through the
transportation reauthorization bill!**

Don't Forget Freight!

**Do we have to draw
you a picture?**

If you got it,
our essential and
multi-modal freight
transportation system
brought it!

*Crayons provided by
Binney & Smith,
owners of the Crayola brand.*

7

